



Earls Field, Brandon, Suffolk, IP27 9QW

Rent - £1,350 PCM Deposit - £1,557

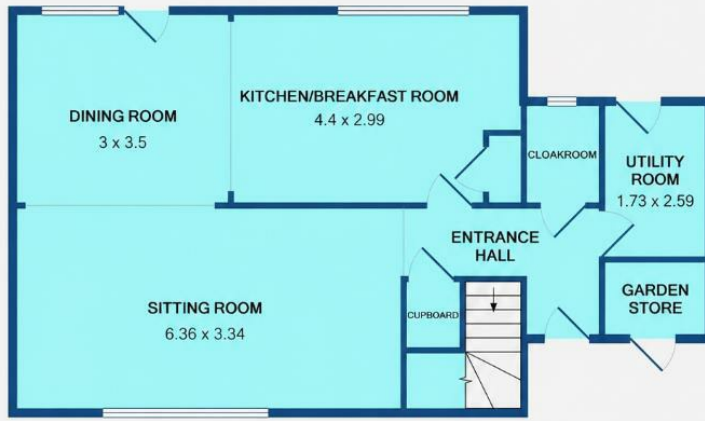
Delightful link detached house offers a perfect blend of comfort and character. Spanning an impressive 1,345 square feet, the property boasts three well-proportioned bedrooms, making it an ideal home for families or those seeking extra space.

Upon entering, you are welcomed into a spacious reception room that provides a warm and inviting atmosphere, perfect for both relaxation and entertaining guests. The older style of the property adds a unique charm, with

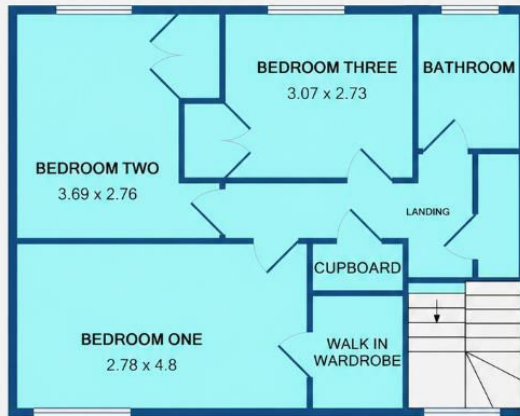
- THREE BEDROOMS
- FITTED KITCHEN
- DRIVEWAY PARKING
- NEARBY TO RAF BASES
- EPC RATING - E
- OPEN PLAN LOUNGE/DINING ROOM
- BATHROOM AND DOWNSTAIRS WC
- ENCLOSED GARDEN
- COUNCIL TAX BAND - B
- EARLY VIEWING ADVISED



Council Tax Band: B - EPC Rating: E 53



GROUND FLOOR
APPROX. FLOOR
AREA 699 SQ.FT.
(65.0 SQ.M.)



1ST FLOOR
APPROX. FLOOR
AREA 576 SQ.FT.
(53.5 SQ.M.)

TOTAL APPROX. FLOOR AREA 1275 SQ.FT. (118.5 SQ.M.)
Measurements are approximate. Not to scale. Illustrative purposes only
Made with MetroPix ©2019

